

ABSORBA-CIDE™

Product Bulletin

ABSORBA-CIDE™
LONG TERM
ENVIRONMENTALLY SAFE
COST EFFECTIVE PROTECTION
AGAINST INSECT PESTS OF STORED GRAIN

ABSORBA-CIDE™
NOW RECOGNISED BY THE BFA
AS AN APPROVED ORGANIC INPUT



A Product of Mount Sylvania Diatomite

ABN: 86 098 012 198

35 Wongoola Cl, O'Connor, ACT

(02) 6161 5992



HOW IT WORKS?

ABSORBA-CIDE™ insecticidal properties result from physical and not chemical activity - it abrades and absorbs the waxy cuticle of insects - leaving them open to dehydration.

FEATURES OF ABSORBA-CIDE™

- Controls all important insect pests in stored grain including beetles, borers, moths and weevils
- Provides protection for 12 months or longer
- Can be used on all cereal grains, rice, maize, sorghum, pulses and other food commodities
- For Pre-harvest disinfestation of harvesting, grain handling equipment and storages
- For total grain treatment or as a protective barrier against insect infestation in storages



LESSER GRAIN BORER

BENEFITS OF ABSORBA-CIDE™

- ✓ **Environmentally Safe**
Absorba-Cide is a natural, harmless, non-toxic product
- ✓ **No Chemical Residues**
Storages, equipment and grain remain free of chemical residues
Absorba-Cide has no Withholding period
- ✓ **Superior Cost / Performance**
Absorba-Cide provides long term protection Cost is comparable to chemical treatments
Absorba-Cide will not degrade like chemicals
- ✓ **Broad Spectrum of Activity**
Absorba-Cide is effective against all grain insect pests including those resistant to chemical insecticides
- ✓ **Versatility in Application**
Absorba-Cide can be applied as a dust or with water and sprayed as a grain treatment or for disinfestation



FLAT GRAIN BEETLE



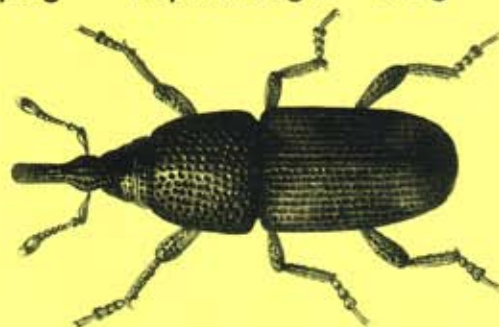
GRANARY WEEVIL

CLEAN UP

- Application to header harvesters. Distribute at the following locations:

Comb	400g	Riddles	400g	Front Elevator	100g	Bulk Bin	100g
Drum and concave	600g	Screen	200g	Straw walkers	400g	Dispatch auger	100g

- Application to grain storages
- Absorba-Cide can be applied as a **dust at 2gm/m²** with air-powdered equipment using bellows or venturi blowers
- Can be applied as a **spray solution at 6gm/m²** in water using standard spray equipment with good agitation
Use high pressure hand gun, knapsack sprayers or misters



RICE WEEVIL

GRAIN TREATMENT

Three different options are available for grain treatment. Absorba-Cide can be used as:

- 1 Grain Mass Application** - For on-farm feed and seed grain stored in silos not fitted with aeration or fumigation facilities
Treat of grain at a rate of 1 kg/tonne
Absorba-Cide can also be applied to grain (paddy rice only) as a wettable powder spray at 1 kg /tonne.
- 2 Cap treatments** - With bin and handling equipment cleaned and disinfested, clean grain can be loaded into the storage facility. Then add a 50 cm barrier of Absorba-Cide treated grain
Treated at a rate of 1 kg/ tonne
- 3 Snow cap treatment** - A barrier treatment on top of treated grain as a **snow coating at a rate of 100g/M²**
This can be combined with other chemical treatments.



SAW TOOTHED GRAIN BEETLE

SUMMARY

- ✓ Absorba-Cide in Integrated Pest Management (IPM) programs can prevent insect damage, reduce storage cost and avoid chemical contamination of stored grain.
- ✓ Absorba-Cide has been researched and tested by the Queensland Department of Primary Industries and the University of New South Wales.
- ✓ It does not affect germination and has no withholding period.
- ✓ Absorba-Cide provides protection free of chemical residues.
Grain can be processed and consumed immediately after treatment.
- ✓ Absorba-Cide controls all stored-grain insects including the
 - rice weevil
 - granary weevil
 - red flour beetle
 - confused flour beetle
 - lesser grain borer
 - saw-toothed grain beetle
 - flat grain beetle
 - Indian meal moth
 - Angoumois grain moth



RUST RED FLOUR BEETLE

DISINFESTATION

For effective grain protection against insects, good hygiene is essential. Ensure grain bins, silos, harvesting and all equipment is clean. Insects in old grain debris will quickly spread through fresh grain.

Good grain management systems includes a regular monitoring program. This identifies problems at an early stage. Remedial action will then be easier and cheaper. Grain loss or deterioration will be minimized.

Dust Applications at Application rate of - $2\text{g}/\text{m}^2$.

EXAMPLES.

1. A structure 40 metres x 20 metres with 5 metre high walls would require 4.4 kg Absorba-Cide.
2. A cylindrical silo with a diameter of 10 meters (radius 5 meters) and a height of 8 meters would require 0.8 kg of Absorba-Cide.

Spray Application at Application rate of - $6\text{g}/\text{m}^2$.

Trials run in conjunction with Australia's State bulk grain handling authorities resulted in the uniform adoption of this technology by the Australian grain industry.

- Application Rate -Prepare a spray mixture of 120g Absorba-Cide per litre of water and apply at a rate of 5 litres/100 m^2 (6 g/ m^2 dry basis) which is just below the run-off point. Take care to apply the spray uniformly. Never apply above the run-off point.
- Positive displacement pumps such as gear or piston pumps cannot be used with the exception of diaphragm types designed to handle slurries.

EXAMPLE.

At a rate of $6\text{g} / \text{m}^2$ 120 kg of Absorba-Cide will coat 20,000 m^2 of surface. This corresponds to all surfaces, roof, walls and floor of a grain storage shed measuring approximately 50 m wide, 50 m long and 8 m high.

Constraints on the Product's Use.

DO NOT treat grain to be delivered to grain handling authorities.

As the insecticidal activity of the product lies in its drying properties, very high humidity can reduce the effectiveness of Absorba-Cide.

Safety

Although Absorba-Cide is an inert dust, breathing in excessive amount of any dust is not recommended. When exposed to the dust during application, wear goggles and a disposable dust mask.

Effect on Machinery

Trials carried out by the Western Australian Department of Agriculture concluded that Amorphous Silica products would not adversely affect the normal working of machinery.



Organic Certification Allowed Input number
10575AI

APVMA Registration 53700

